



Cabinet Office

CARBON REDUCTION PLAN GUIDANCE

Notes for Completion

Where an In-Scope Organisation has determined that the measure applies to the procurement, suppliers wishing to bid for that contract are required at the selection stage to submit a Carbon Reduction Plan which details their organisational carbon footprint and confirms their commitment to achieving Net Zero by 2050.

Carbon Reduction Plans are to be completed by the bidding supplier entity and must meet the reporting requirements set out in supporting guidance, and include the supplier's current carbon footprint and its commitment to reducing emissions to achieve Net Zero emissions by 2050.

The Carbon Reduction Plan should be updated regularly (at least annually) and published and clearly signposted on the supplier's UK website. It should be approved by a director (or equivalent senior leadership) within the supplier's organisation to demonstrate a clear commitment to emissions reduction at the highest level. Suppliers may wish to adopt the key objectives of the Carbon Reduction Plan within their strategic plans.

A template for the Carbon Reduction Plan is set out below. Please complete and publish your Carbon Reduction Plan in accordance with the reporting standard published alongside this PPN.

Carbon Reduction Plan Template

Supplier name: **Amey Rail Limited**

Publication date: 2023

Commitment to achieving Net Zero

Amey Rail Limited is committed to achieving Net Zero emissions by 2040.

Baseline Emissions Footprint

Baseline emissions are a record of the greenhouse gases that have been produced in the past and were produced prior to the introduction of any strategies to reduce emissions. Baseline emissions are the reference point against which emissions reduction can be measured.

Baseline Year: 2019

Additional Details relating to the Baseline Emissions calculations.

The 2019 baseline detailed below, was calculated using established datasets for Scope 1 and 2 and Category 6 – Business Travel in Scope 3.

The remaining Scope 3 Categories in the scope of this Carbon Reduction Plan have been calculated using new datasets and methodologies which were not established within the business before 2021. These were established to ensure we can calculate, monitor and reduce our Scope 3 emissions as an integral aspect of our Net Zero Ambition, which was launched in April 2021.

The Carbon Emissions detailed within this Carbon Reduction Plan are calculated in accordance with the GHG Corporate Accounting and Reporting Standard and the GHG Protocol Scope 3 Technical Guidance. The operational boundary has been set using the Operational Control approach.

In 2022 Amey gained external verification from BSI of our annual carbon footprint to ISO 14064-1: Organization level for quantification and reporting of greenhouse gas emissions and removals for the years 2019 – 2022. As a result, our baseline footprint has increased by 41 tCO₂e to reflect the externally verified footprint.

Baseline year emissions:		
EMISSIONS	TOTAL (tCO₂e)	
Scope 1	5,747	
Scope 2	90	
Scope 3 (Included Sources)	Category 4 - Upstream Transport & Distribution	478
	Category 5 - Waste Generated in Operations	297
	Category 6 - Business Travel	685
	Category 7 - Employee Commuting	2,786
	Category 9 - Downstream Transport & Distribution	0 ¹
	Scope 3 TOTAL	4,246
Total Emissions	10,083	

Current Emissions Reporting

Reporting Year: 2022		
EMISSIONS	TOTAL (tCO₂e)	
Scope 1	1,736	
Scope 2	1	
Scope 3 (Included Sources)	Category 4 - Upstream Transport & Distribution	530
	Category 5 - Waste Generated in Operations	38
	Category 6 - Business Travel	203
	Category 7 - Employee Commuting	851
	Category 9 - Downstream Transport & Distribution	0 ¹
	Scope 3 TOTAL	1,622
Total Emissions	3,359	

¹ (We do not sell goods that are transported to the consumer/purchaser by third parties)

Emissions reduction targets

In order to continue our progress to achieving Net Zero, we have adopted the following carbon reduction targets.

In line with SBTi commitments Amey have set a target to reduce all scopes by 42% by 2030 and then rising to 68% in 2035 from a 2019 base year.

Progress against these targets can be seen in the graph below:

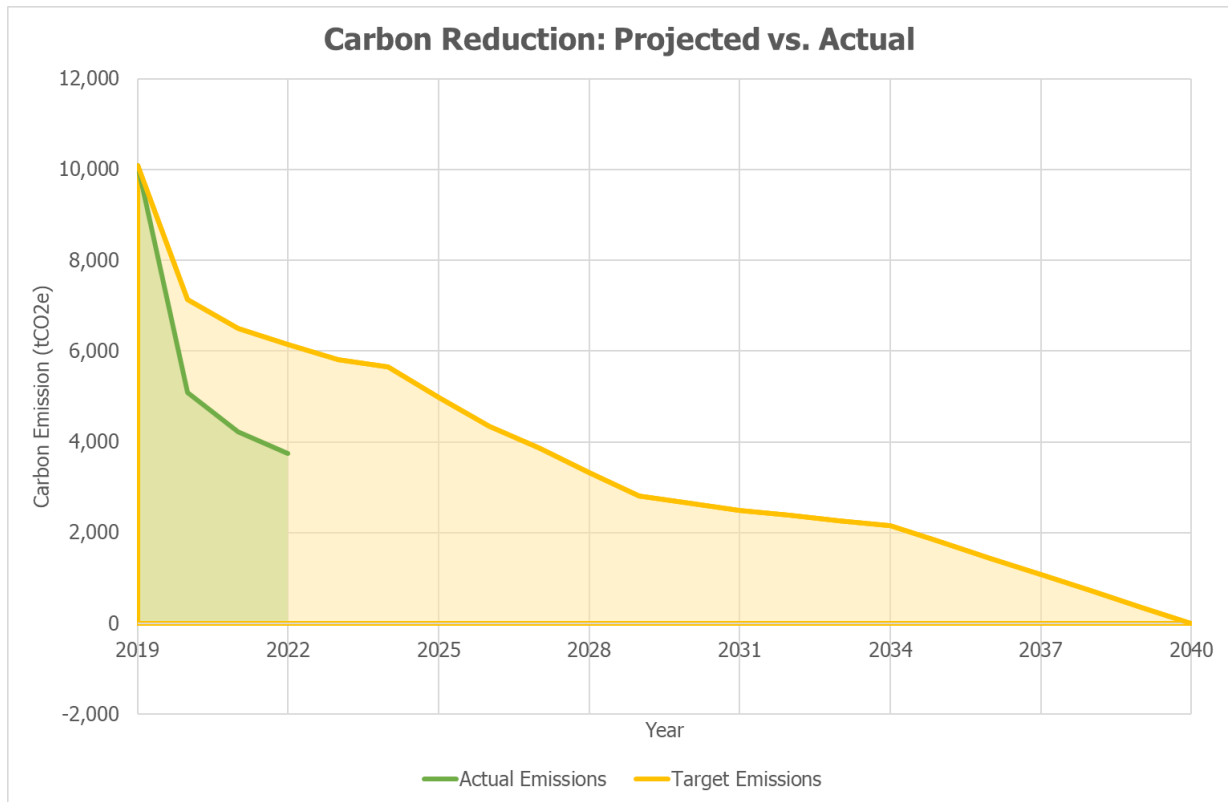


Figure 1: Our Carbon Reduction – Projected vs. Actual for Amey Rail Limited


Carbon Reduction Projects

Completed Carbon Reduction Initiatives

The following environmental management measures and projects have been completed or implemented since the **2019** baseline, until end **2022**.

The carbon emission reduction achieved by these schemes equate to **6,724** tCO₂e, a **67%** reduction against the **2019** baseline and the measures will be in effect when performing the contract.

Our environmental management measures

Our Framework	Amey ESG Strategy
Our Commitment	Amey Social Value Policy Amey Environmental Policy
Our Pledge	Signatory “Pledge to Net Zero” – IEMA Corporate Membership  United Nations Global Compact - Sustainable Development Goals (SDG)
Our Road Map to Net Zero	Amey's Road Map
Our Targets	<ul style="list-style-type: none">• 2035 scope 1 & 2 Net Zero with 80% reduction, Scope 3 68% reduction (2019 baseline).• 2040 Net Zero (Scope 1-3) with 10% off-setting; science-based target.• Our targets are in-line with pathways that limit global warming to 1.5oC above pre-industrial levels. We have submitted our targets, roadmap and made a Commitment to Science Based Targets (SBT) through the SBT Initiative (SBTi).
Our Principles	<ul style="list-style-type: none">• REDUCE our energy consumption, becoming more efficient in delivering services• TRANSITION our energy use to low carbon alternatives, with a focus on eliminating fossil fuels from vehicles and plant• INNOVATE the use of tools and materials in our design and operations, working to assess and identify sustainable low carbon alternatives• ENGAGE our customers, industry, and suppliers, ensuring circular economy principles are driven through the supply chain

Our People

- Our Environment Social Governance Director and Amey Group ESG Team with Carbon & Climate Business Partner and Environmental Manager
- Our Professional Environmental and Sustainability Heads, Business Partners and Advisors within our Health, Safety, Environment and Quality Support Function
- Our Environmentalists and Carbon Practitioners within our Sustainability Solutions Team providing in-house, multi disciplinary support to teams, to achieve:
 - Environmental Assessment and Enhancements': with the aim of ensuring nature thrives and creating biodiversity gain
 - Climate, Resilience and Adaptation': with the aim of reducing carbon emissions and supporting climate change resilience
 - Leading provider of full life-cycle engineering, operations and decarbonisation solutions.
- Our CEEQUAL, BREEAM and Energy Assessors
- Our Chartered Mechanical and Electrical Engineers, Civil and Structural Engineers and Architects within our Design & Consultancy, Construction and Operational Teams.
- Our Data Analysts providing Advisory Services and Digital and Data Solutions

Supporting Green Careers

- We are proud partners of the Green Careers Hub. We recognise the need to support all people into green careers and help existing green careers to enable even more people to contribute.
- To support this, we have introduced an Environmental Practitioner Degree Apprenticeship programme. This enables apprentices can gain an IEMA-accredited Environmental Management degree with Coventry University to aid their practical development at Amey.
- Environment & Sustainability Graduate Programme, encouraging young people into our sectors, providing them with skills in line with the IEMA Sustainability Skills Map, taking them from Graduate to Practitioner, helping to drive positive change.

Designing Out Carbon

- Our Consulting teams have developed a comprehensive strategy to work towards zero carbon on all our projects. While carbon assessment is mandatory on all projects worth over £1 million, we still seek opportunities to reduce carbon as a matter on all our contracts, regardless of value.
 - Our designers and engineers are expected to go beyond basic environmental considerations and think about carbon reduction as an integral aspect of every project. They are trained to apply the PAS 2080 principles which provides structured guidance on carbon management and reducing emissions across the built environment and infrastructure. This starts with initial feasibility studies and advising clients
-

on what infrastructure is needed to support a low carbon economy.

Low Carbon Transport

- We will assess carbon emissions throughout an asset's whole lifecycle including design, construction and maintenance to understand Whole Life Carbon, using tools such as One-Click-LCA.
- We utilise tools such as the Rail Carbon Tool – a web-based resource that provides information about embodied carbon associated with products and activities related to rail infrastructure projects. We are building our own product library containing detailed carbon calculations for use with the tool. By linking this information to our CAD models, we can make much more accurate carbon assessments of our designs. More data is added after each project, expanding the knowledge base and increasing our ability to make decisions that reduce our carbon footprint.

Working with our Supply Chain

Engage with high impact suppliers to bring down emissions

- Our Social Value [Supply Chain Charter](#) & Refreshed Contract Terms
- ISO 20400 Certification

Fleet & Plant Team: Working with key suppliers (HSS, Novuna, JCB) on key developments, innovations, technology available through supply chain.

HSS ESG Working Group: Delivering improved reporting capability, key carbon hotspots and best-practice low carbon solutions for construction/welfare. A Key project was a review of the Core Valley Lines project to identify low-carbon & alternative power solutions for an existing number of deployed facilities.

Working with Climate Action organisations



Our Performance

[Social Value Report 2021](#)

Our Certification / Verification Schemes

- International Organisation for Standardisation (ISO) 14001 Environmental Management Amey Transport Infrastructure (TI) certificate no. EMS 535951) to protect the environment and respond to changing environmental conditions, in balance with socio-economic needs
- ISO 44001 Collaborative Business Relationship (Amey Transport Infrastructure (TI) certificate no. CBR 738863) for the effective identification, development and management of collaborative business relationships.
- Our carbon footprint is verified to ISO 14064-3, the international specification for the verification and validation of greenhouse gas statements. Verification Opinion Number CFV 777256 31012023.
- ISO 20400 Sustainable procurement [in progress] integrating sustainability into our procurement policies and practices, including our supply chains, helping to manage risks (including opportunities) for sustainable environmental, social and economic development in line with the SDG's.
- PAS 2080 claim of conformity based on independent third-party certification [in progress] For confirming “Carbon management process for work undertaken on project and programmes of work implemented as Asset Manager, Designer and Constructor in accordance with PAS 2080 BSI certified.”

Specific carbon reduction measures we have adopted

We have adopted a lifecycle approach to reduce carbon throughout delivery see Figure 2

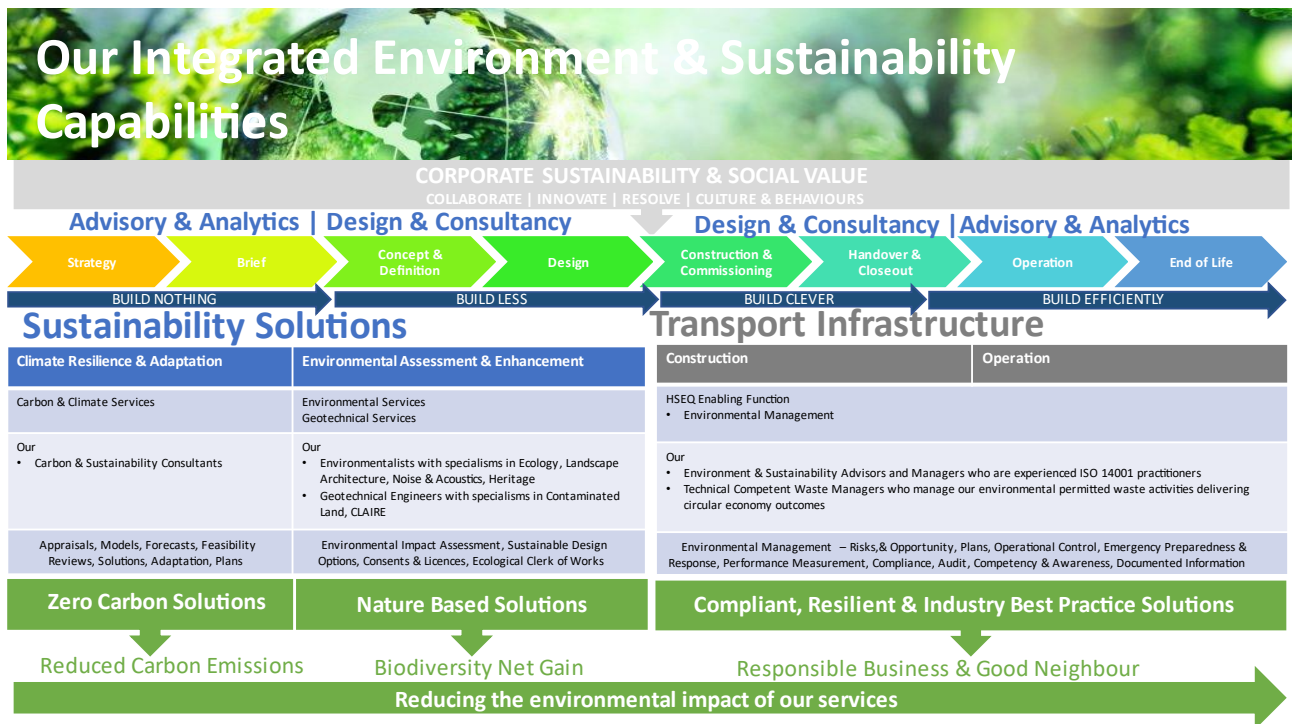


Figure 1: Our approach reduces carbon throughout the lifecycle of delivery – from strategy to end of life stages

Our Zero Carbon Pathway: some of our completed carbon reduction projects

Pre 2020 Energy Saving Opportunity Scheme Compliance and Point Source Solutions to meet contractual obligations

2020 - 2021 **Reducing our Footprint:** Back to Basics - understanding the context of our organisation and the environment we operate in today, involving establishing accurate carbon data that goes beyond energy performance and developing Net Zero Road Maps.

Brent Cross Cricklewood Sidings Project - To reduce the number of road vehicles, a temporary rail head was installed to the South Sidings to facilitate engineering trains to enter the site so materials could be delivered to the project and wastes removed from site by rail. For the removal and installation of the North Sidings, the local rail network was utilised. To date, 64,189 tonnes of material have been imported/exported by NR SCO trains as part of the project. This has resulted in a reduction of an estimated 7,552 road vehicle movements from the local area. Utilising freight train compared to a standard 17 tonne road wagon represents an 86% reduction in kg CO₂e, per tonne/per kilometre.

Pledge to Net Zero: We became signatories to the Institute for Environmental Management and Assessment (IEMA)'s Pledge to Net Zero, which commits UK businesses to science-based targets to meet the UK's 2050 net zero target and publicly report progress each year.

Science Based Target Initiative (SBTi): Business Ambition for 1.5C Commitment Letter submitted aligning Amey climate mitigation targets with the aims of the Paris agreement.

Switching to purchase 100% green electricity: We transitioned our energy procurement to 100% renewable energy.

Company car choices: We removed all traditional internal combustion engine vehicles from the Company Car Choices List, which now only includes: fully electric vehicles; plug-in hybrids; and petrol/electric hybrids. The list has a good choice of vehicles from a range of manufacturers, with an average CO₂ equivalent of 35g/km.

Foresight - Platform for sharing Health, Safety & Environment Best-Practice & Lessons Learnt.

2021-2022 **Transitioning our fleet:** A partnership with Hitachi Capital Vehicle Solutions to trial a range of electric vehicles - This helped us better understand the capabilities of current electric vehicles and how they would suit the demands of the contracts Amey delivers.

Scope 3 GHG: During 2021, we began work to better understand our Scope 3 carbon emissions to include our extensive supply chain. This work focussed on verifying the completeness of our Scope 3 data and establishing new data sources where gaps were present. This has ensured emissions across the fifteen Scope 3 categories (as defined within the Greenhouse Gas Protocol) have been considered and materially significant emissions identified.

Net Zero Springboard campaign: to generate new ideas to help the business reach its net zero ambitions. Across the business 262 employees submitted ideas. These were evaluated by sustainability experts and the top 8 were shortlisted for a panel review by the Executive Team. The winning idea was centred around carbon psychology, suggesting that we could map the energy behaviours of our sites and

offices using psychology-based questions. This would allow us to create a roadmap to change focussing on key areas for improvement.

**2022-
2023**

Science Based Target Commitments: Technical documents, target submission and application made March 2023. We are currently in the period of application verification which is due to be completed in 2024.

GHG Management System: The quantification and reporting of the GHG emissions has been independently verified by BSI against the specifications defined in ISO 14064-1:2018.

Launched our **EV First company car policy**

ESG Strategy Launch: Outlining Priority Actions 2023 – 2025, including

- Accelerating the change to a resilient low carbon future, through decarbonisation and energy efficiency, reducing and optimising the use of energy and natural resources across infrastructure management.
- Getting our house in order, achieving Net Zero by 2040.

Be Digital enhanced systems and capabilities to report on carbon emission: Work ongoing to Develop our 'Carbon Bureau' measurement and reduction tool.

Procurement to focus on top suppliers to decarbonise Amey's supply chain: Engage with high impact suppliers to bring down emissions

The Carbon Challenge: Project Carbon Challenge is to provide an effective, independent review of the carbon implications of engineering projects and the contribution to climate change. Embodied Carbon is assessed using the Rail Carbon Tool, to identify Hotspots and identify risks & opportunities to reduce carbon in design and construction.

Amey Eco Awards – Internal recognition programme.

Our Net Zero Road Maps - low carbon options identified using the Rail Carbon Tool (RSSB) as part of the Environment & Social Appraisal and documented within the Energy and Operational Carbon section of the Environment and Social Management Plan (ESMP)

In the future we hope to implement further measures such as:

Planned carbon reduction projects	
NET ZERO ORGANISATION Getting our own house in order - achieving Net Zero by 2040	Transition to electric and alternatively sourced vehicles, plant and equipment. EV Targets by end of 2024: <ul style="list-style-type: none">• 50% employees with an EV Company Cars (Bands A to G), including 'Business Need' and 'Benefit populations'• 25% commercial vehicles (cars and LCVs) transitioned to EV Role our EV charging infrastructure with Novuna Vehicle Solutions following successful: pilots at Ayre and Polmadie sites.
	Engage with high impact suppliers to bring down emissions Decarbonisation Plans developed for Key Procurement Categories
	Establish robust and validated carbon emissions to enable continuous improvement through development of our Be Digital Carbon Management Solution and verification of our 2023 GHG Inventory to ISO 14064 standards by BSI
	Work across the value chain to embrace circular principles to reduce waste and material consumption embedding key strategies including Circular design, Reuse, Resource recovery, Leasing, Repair, Enabling technologies, Remanufacture and Sharing economy
DECARBONISATION & ENERGY EFFICIENCY Reducing and optimising the use of energy and natural resources across infrastructure management	Achieve PAS 2080 Carbon in Infrastructure Management certification as Asset Manager, Designer and Constructor in 2024
SUSTAINABLE SUPPLY CHAIN Engaging and integrating suppliers, championing local business and elevating the total value they bring	Achieve ISO 20400 Sustainable Procurement Management certification in 2024. Integrating sustainability into the organization's procurement policy and strategy, Organizing the procurement function toward sustainability, Integrating sustainability into the procurement process. Certification on track to be achieved in 2024.
INVESTING IN OUR PEOPLE Championing a safe and progressive workplace where people can be their best	Amey ESG Director Training with IEMA Sustainability Ambassadors Programme with supporting Sustainability Essentials collateral, enabling better understanding and the effective implementation of Amey ESG themes, ensuring our people have the drive to turn vision into action, including: <ul style="list-style-type: none">• Think Green Behaviour Maturity Tool and Code• Carbon Literacy• Sustainability Skills Workshop with IEMA

Declaration and Sign Off

This Carbon Reduction Plan has been completed in accordance with PPN 06/21 and associated guidance and reporting standard for Carbon Reduction Plans.

Emissions have been reported and recorded in accordance with the published reporting standard for Carbon Reduction Plans and the GHG Reporting Protocol corporate standard² and uses the appropriate Government emission conversion factors for greenhouse gas company reporting³.

Scope 1 and Scope 2 emissions have been reported in accordance with SECR requirements, and the required subset of Scope 3 emissions have been reported in accordance with the published reporting standard for Carbon Reduction Plans and the Corporate Value Chain (Scope 3) Standard⁴.

This Carbon Reduction Plan has been reviewed and signed off by the board of directors (or equivalent management body).

Signed on behalf of the Supplier:



Peter Anderson

Managing Director, Transport Infrastructure, Amey and active officer for Amey Rail Limited

Date: 16/11/2023

Record of revision

Date	Details
29/09/2021	First issue for sign off
06/10/2022	Updated with 2021 data, current environmental management measures and future measures in line with Amey Bolder Steps Together
29/11/2022	Added Scope 3 category breakdowns, following feedback from the Crown Commercial Service. Correction to Scope 3, Category 4 values for baseline and current year, due to typo.
13/11/2023	Updated inline with new ESG Strategy.

² <https://ghgprotocol.org/corporate-standard>

³ <https://www.gov.uk/government/collections/government-conversion-factors-for-company-reporting>

⁴ <https://ghgprotocol.org/standards/scope-3-standard>

Appendix A

Amey Rail Limited is a 100% owned subsidiary of the Amey Limited which operates within the Amey Transport Infrastructure Business Unit (one of 3 internal operating business units) and has its own Managing Director and management team who are responsible for the delivery of the service.

Each operating business unit operates in accordance with Amey Limited group policies and procedures as adapted to the specific business unit and operating legal entity requirements.

Therefore, Amey Rail Limited trades as Amey that reflects the operational branding of Amey Limited and relevant subsidiaries.

Scope of activities operated by Amey Rail Limited

Active	Taff Wells (Transport for Wales)
	TRU
	Midland Mainline Framework
	E&P Framework
	Signalling
	CEFA/CAFA CP6